

PB-MC-AVR28 28 Pin AVR Full Size Development Board

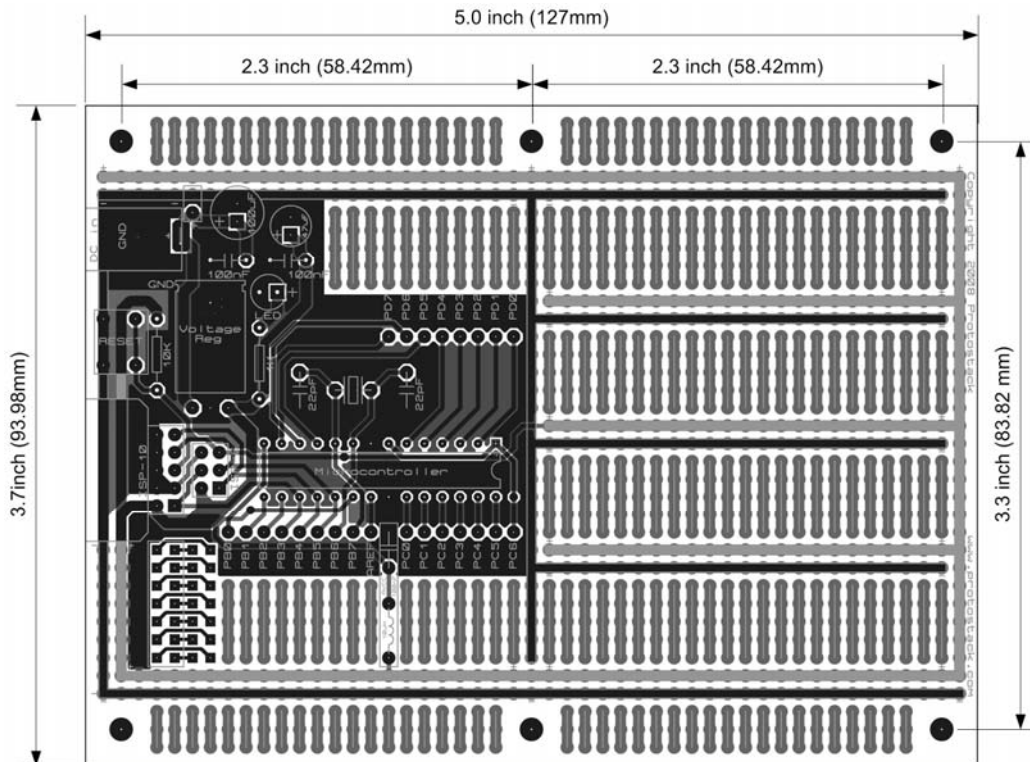
Overview

The Protostack 28 Pin AVR Full Size Development Board is designed for ATMEL AVR Microcontrollers that are available in the PDIP 28 pin package. This board provides the infrastructure necessary to use the microcontroller, “untangles” the I/O ports in order to present them in an orderly fashion, and provides area for the user to add their own circuitry

Specifications

Size:	5" x 3.7" (127 x 93.98mm)
Mounting Holes:	6 x 0.125" (3.175mm)
Component Holes:	1414 x 35mil (0.9mm), 34 x 30mil (0.75mm)
Component Hole Pitch:	0.1" (2.54mm)
Board Material:	FR4
Pad Treatment:	Lead Free HAL
Copper Thickness:	1oz per sqr foot
Track Width:	60+50 mil for power busses 60 mil for prototyping section
Supported Microcontrollers:	ATMEL ATMEGA8(L) ATMEL ATMEGA48(V) ATMEL ATMEGA88(V) ATMEL ATMEGA168(V) ATMEL ATMEGA328 ATMEL AT90S2333 (obsolete) ATMEL AT90S4433 (obsolete)

Physical Diagram



Circuit Diagram

