

## PB-GE-M2 Prototyping Board - Medium - Style 2

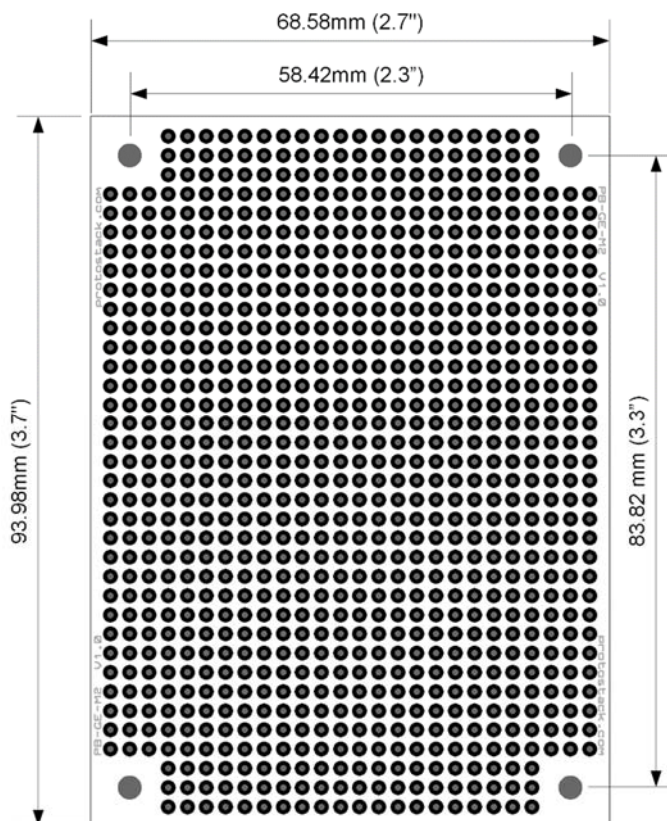
### Overview

This is the half size version of our popular prototyping board. It still has all the same features and but in a compact size. This board can be stacked with other large, medium or small protostack boards.

### Specifications

Size	68.58 x 93.98mm (2.7" x 3.7")
Mounting Holes	4 x 3.175mm (0.125")
Component Holes	900 x 0.9mm (35mil)
Component Hole Pitch	2.54mm (0.1")
Board Material	1.6mm FR4
Pad Treatment	Lead Free HASL
Copper Thickness	1oz per sqr foot
Rated Voltage	44V <sup>1</sup>
Operating Temperature	-30°C to 125°C

### Physical Diagram



<sup>1</sup> Voltage rating was calculated in accordance with IPC-9592B