

PB-GE-M1 Prototyping Board - Medium - Style 1

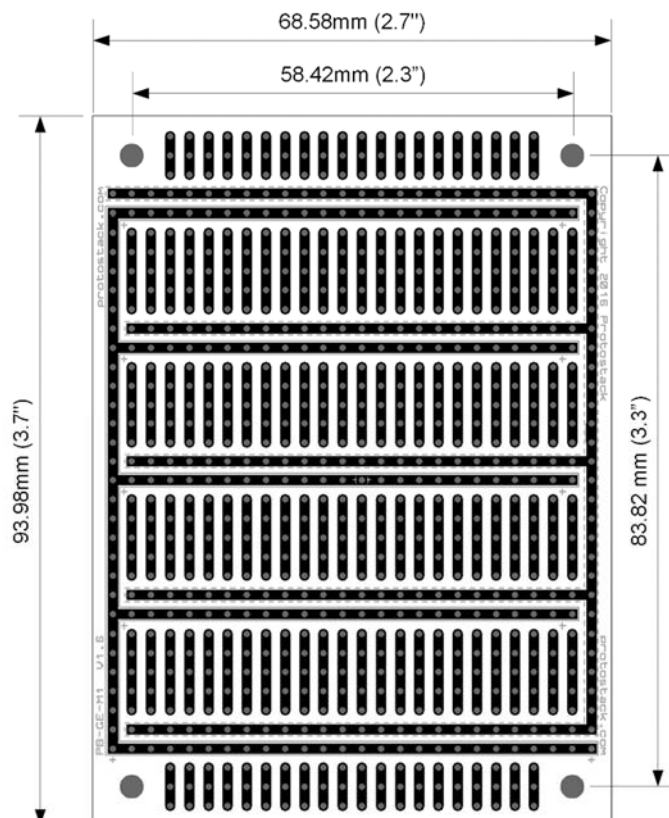
Overview

This is the half size version of our popular prototyping board. It still has all the same features and but in a compact size. This board can be be stacked with other large, medium or small protostack boards.

Specifications

Size:	68.58 x 93.98mm (2.7" x 3.7")
Mounting Holes:	4 x 3.175mm (0.125")
Component Holes:	900 x 0.9mm (35mil)
Component Hole Pitch:	2.54mm (0.1")
Board Material:	1.6mm FR4
Pad Treatment:	Lead Free HASL
Copper Thickness:	1oz per sqr foot
Track Width:	Top: 54mil (1.37mm) Bottom: 70mil (1.78mm)
Rated Current	6.5A ¹
Rated Voltage	65V ²
Operating Temperature	-30°C to 125°C

Physical Diagram



¹ Rated current is based on many factors including acceptable temperature rise and ventilation. When calculating rated current, we assumed 10°C acceptable temperature rise and board in open air

² Voltage rating was calculated in accordance with IPC-9592B