

PB-GE-L1 Prototyping Board - Large - Style 1

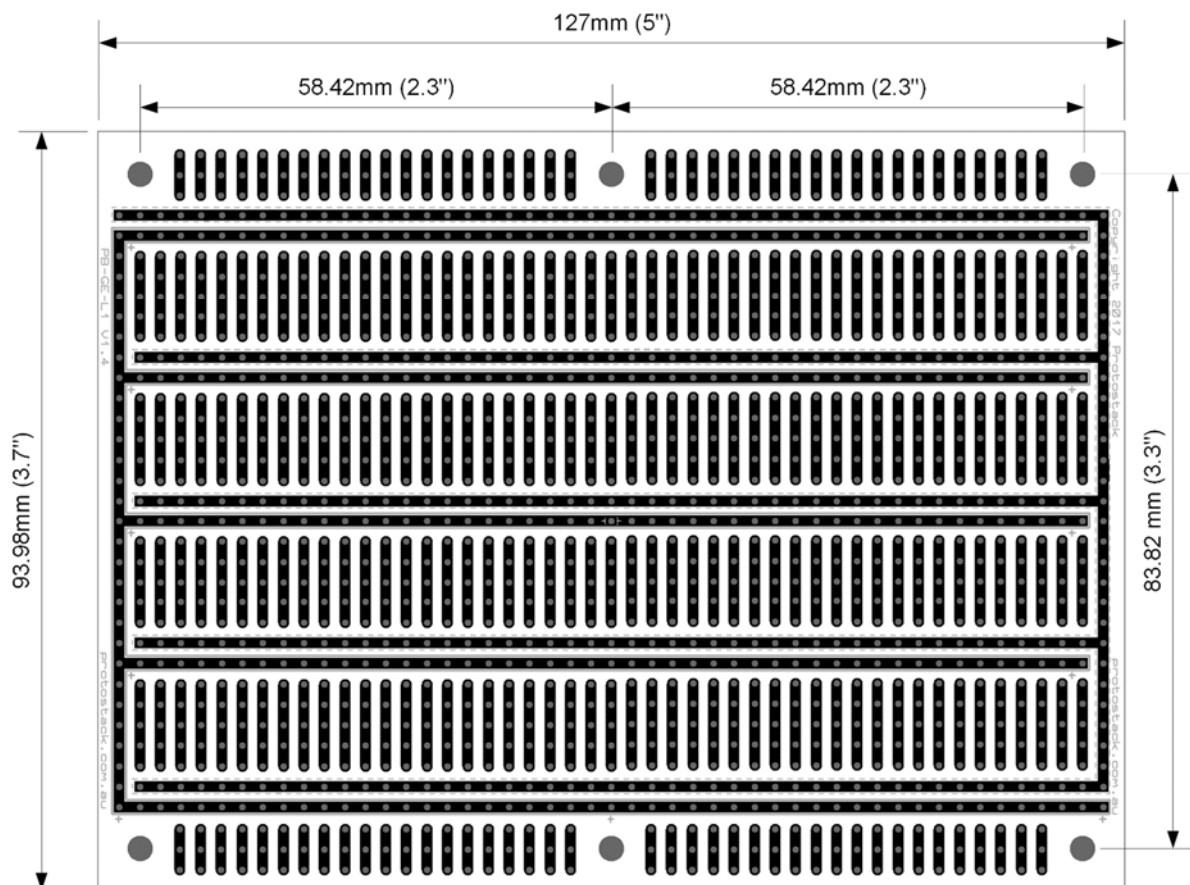
Overview

This board is based on a standard breadboard layout which makes it easy to transfer your designs from a breadboard to a more permanent form. It can be stacked with other large, medium or small Protostack boards.

Specifications

Size:	127 x 93.98mm (5" x 3.7")
Mounting Holes:	6 x 3.175mm (0.125")
Component Holes:	1710 x 0.9mm (35mil)
Component Hole Pitch:	2.54mm (0.1")
Board Material:	1.6mm FR4
Pad Treatment:	Lead Free HASL
Copper Thickness:	1oz per sqr foot
Track Width:	Top: 54mil (1.37mm) Bottom: 70mil (1.78mm)
Rated Current	6.5A ¹
Rated Voltage	65V ²
Operating Temperature	-30°C to 125°C

Physical Diagram



¹ Rated current is based on many factors including acceptable temperature rise and ventilation. When calculating rated current, we assumed 10°C acceptable temperature rise and board in open air

² Voltage rating was calculated in accordance with IPC-9592B